



RDAB20S-S

Damper actuator, 20 Nm

Damper actuator with spring return for control of dampers during power failures. With two auxiliary switches.

- Torque 20 Nm
- For dampers up to 4 m² in size
- 24...240 V AC / 24...125 V DC

- Two-position control (On/Off)
- Two built-in auxiliary switches

RDAB20S-S is a spring return actuator for operating air control dampers to an open or closed position during power failures.

Simple direct mounting

The actuator is easy to mount directly onto the damper spindle using a universal spindle clamp. The actuator comes supplied with a double anti-rotation strap to prevent it from rotating.

Operation

When the supply voltage is connected the actuator moves to its working position, while at the same time the spring return tenses. If the supply voltage is interrupted, the energy stored in the spring is released, returning the actuator to its safe position.

Manual override

The damper can be adjusted manually and can be set to its desired position via the locking switch. The actuator can be made to resume normal operation either by resetting the locking switch or by reconnecting the supply voltage.

Adjustable angle of rotation

The angle of rotation can be adjusted using mechanical end stops.

Flexible signalling

RDAB20S-S has two built-in microswitches. One with a set breakpoint at 10% and one with an adjustable breakpoint between 10...90% of the turning area.

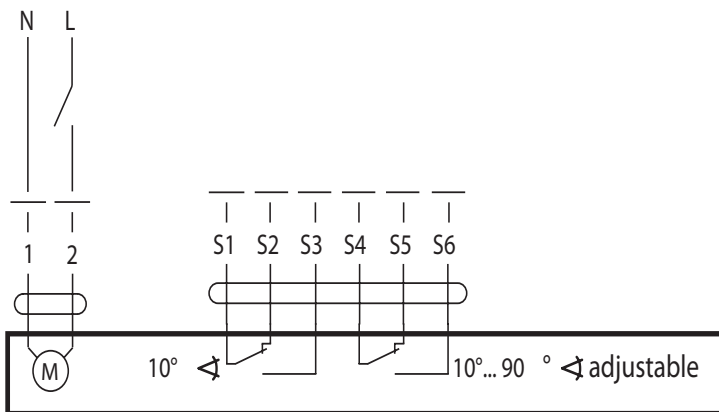
High functional reliability

The actuator is overload-proof and does not require any limit switches. It will halt automatically when the end stop is reached.

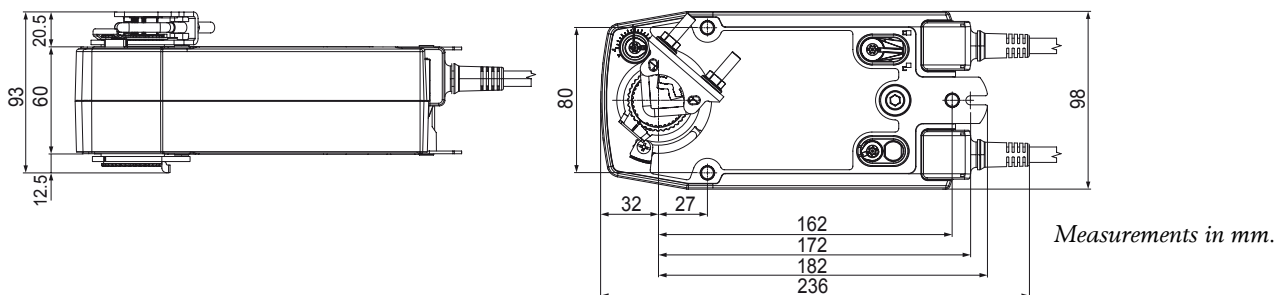
Technical data

| | |
|---------------------------------------|--|
| Supply voltage | 24...240 V AC / 24...125 V DC, 50-60 Hz |
| Nominal voltage range | 19.2...264 V AC / 21.6...143 V DC |
| Power consumption | |
| Running (at nominal torque) | 7.0 W |
| Holding | 8.5 W |
| For wire sizing | 18 VA |
| Direction of rotation (motor) | Reversible by switch right/left |
| Direction of rotation (spring return) | Selectable by mounting L/R |
| Torque | Min. 20 Nm at rated voltage |
| Auxilliary switches | 2xSPDT, 1mA... 3(0.5)A, AC 250 V, one fixed at 10%, one adjustable 10...90% |
| Angle of rotation | Max. 95°, adjustable via locking switch |
| Running time (motor) | <75 s |
| Running time (spring return) | <20s |
| Sound power level | Max. 45 dB (A) |
| Position indication | Mechanical |
| Protection class | IP54 |
| Ambient temperature | -30...+50°C |
| Storage temperature | -40...+80°C |
| Cable | 1 m, 2 x 0.75 mm ² |
| CE | This product conforms to the requirements of European EMC standards 2004/108/EC. It also conforms to the Low Voltage Directive (LVD) 2006/95/EC and carries the CE mark. |

Wiring



Dimensions



Head Office Sweden

Phone: +46 31 720 02 00
 Web: www.regin.se
 Mail: info@regin.se

Sales Offices

France: +33 1 41 71 00 34
 Germany: +49 30 77 99 40
 Spain: +34 91 826 54 06
 Hong Kong: +852 24 07 02 81
 Singapore: +65 67 47 82 33

REGIN

THE CHALLENGER IN BUILDING AUTOMATION